

20

^{2nd} **IMAGING & PHYSIOLOGY Summit**

08

Course Directors

Myeong-Ki Hong, MD
Ik-Kyung Jang, MD
Tae-Hwan Lim, MD
Gary S. Mintz, MD
Seong-Wook Park, MD
Seung-Jung Park, MD
Seung-Jea Tahk, MD

Save the Dates!!

^{3rd} **IMAGING Summit 2009**

November 20 (Fri) ~ 21 (Sat), 2009

- Invasive Coronary Imaging - IVUS, VH-IVUS, OCT, IB-IVUS
- Non-Invasive and Molecular Coronary Imaging - CT, MR, SPECT, PET CT
- Up-to-Date Physiology
- Vulnerable Plaque - Pathophysiology, Detection, and Therapeutic Intervention
- Challenging Case Competition-Meet the Experts
- Great Debate
- Practical Workshop at the Learning Center

Secretariat of the ^{2nd} IMAGING & PHYSIOLOGY Summit 2008

CardioVascular Research Foundation (CVRF)

2nd floor, Asan Institute for Education & Research, 388-1, Poongnap-2dong, Songpa-gu, Seoul, 138-736, Korea

Tel: 82-2-3010-4799/4708 | Fax: 82-2-475-6898 E-mail: kakim@summitmd.com / kelly@summitmd.com

URL: www.imaging-physiology.com

2nd IMAGING & PHYSIOLOGY Summit 2008

*“More Technical and
More Practical Workshop”*



Course Directors

Myeong-Ki Hong, MD
Ik-Kyung Jang, MD
Tae-Hwan Lim, MD
Gary S. Mintz, MD
Seong-Wook Park, MD
Seung-Jung Park, MD
Seung-Jea Tahk, MD

Affiliations

- Cardiovascular Research Foundation (CRF), New York, USA
- The Korean Society of Interventional Cardiology
- Korean Society of Cardiovascular Imaging (KOSCI)

Program Sponsorship and Support

- CardioVascular Research Foundation (CVRF)
- Clinical Research Center for Ischemic Heart Disease,
The Ministry of Health & Welfare in Korea

Learning Objectives

The participants who will attend the conference can:

- Review and integrate the fundamental physical and technical principles to the latest investigations regarding the cardiac imaging and physiology.
- Compare and contrast the merits of using invasive (IVUS, VH-IVUS, OCT, OFDY, FFR), non-invasive (CTA, MRA) cardiac images.
- Learn the techniques for measurement and interpretation of the various imaging and physiologic diagnosis and findings through the clinical cases and teaching software.
- Utilize optimally the clinical application of imaging and physiologic study in diagnosis, evaluation and treatment in the cardiovascular disease.

Target Attendees

- Interventional cardiologists
- General cardiologists
- Physicians interested in cardiovascular imaging
- Radiologists
- Basic scientists
- Vascular medicine specialists
- Paramedical personnel (nurses and technologists)
- Other health care professionals specialized in the endovascular field

Official Language

- English

Invited Faculty

International Faculty

Takashi Akasaka, MD

Wakayama Medical University, Japan

William F. Fearon, MD

Stanford University Medical Center, USA

Kenichi Fujii, MD

Hyogo College of Medicine, Japan

Junbo Ge, MD

Zhongshan Hospital, China

John McB. Hodgson, MD

Sante Personalized Preventative Healthcare, USA

Junko Honye, MD

Nihon University School of Medicine, Japan

Ik-Kyung Jang, MD

Massachusetts General Hospital, USA

Masanori Kawasaki, MD

Gifu University Graduate School of Medicine, Japan

John LaDisa, MD

Marquette University, USA

Michael McConnell, MD

Stanford University Medical Center, USA

Gary S. Mintz, MD

Cardiovascular Research Foundation, USA

Jae-Kuen Oh, MD

Mayo Clinic, USA

Evelyn Regar, MD

Erasmus Medical Center, The Netherlands

Satoru Sumitsuji, MD

Osaka University/Tokushukai Hospital, Japan

Mitsuyasu Terashima, MD

Toyohashi Heart Center, Japan

Korean Faculty

Young-Keun Ahn, MD

Chonnam National University Hospital

Jang Ho Bae, MD

Konyang University Hospital

Ihnho Cho, MD

Yeungnam University Hospital

Jang Hyun Cho, MD

St. Carollo Hospital

Yoon Haeng Cho, MD

Soon Chun Hyang University Bucheon Hospital

Yeon Hyeon Choe, MD

Samsung Medical Center

So-Yeon Choi, MD

Ajou University Hospital

Wook Sung Chung, MD

The Catholic University of Korea, St. Mary's Hospital

Joon Hyung Doh, MD

Inje University Ilsan Paik Hospital

Hyeon-Cheol Gwon, MD

Samsung Medical Center

Joo-Yong Hahn, MD

Samsung Medical Center

Myeong-Ki Hong, MD

Asan Medical Center

Soon Jun Hong, MD

Korea University Anam Hospital

Young Joon Hong, MD

Chonnam National University Hospital

Seung-Ho Hur, MD

Keimyung University Dongsan Medical Center

Jae-Sik Jang, MD

Busan St. Mary's Hospital

Yang-Soo Jang, MD

Yonsei University College of Medicine

Young-Hoon Jeong, MD

Gyeongsang National University Hospital

Byeong-Keuk Kim, MD

NHIC Ilsan Hospital

Chong-Jin Kim, MD

Kyung Hee University East West Neo Medical Center

Hyo-Soo Kim, MD

Seoul National University Hospital

June-Hong Kim, MD

Pusan National University Hospital

Jung-Sun Kim, MD

Yonsei University College of Medicine

Min-Kyu Kim, MD

Hangang Sacred Heart Hospital

Young-Hak Kim, MD

Asan Medical Center

Bon-Kwon Koo, MD

Seoul National University Hospital

Bong-Ki Lee, MD

Kangwon National University Hospital

Cheol Whan Lee, MD

Asan Medical Center

Jae-Hwan Lee, MD

Chungnam National University Hospital

Nae-Hee Lee, MD

Soon Chun Hyang University Bucheon Hospital

Seung Uk Lee, MD

Kwangju Christian Hospital

Seung-Whan Lee, MD

Asan Medical Center

Se-Whan Lee, MD

Soon Chun Hyang University Cheonan Hospital

Tae-Hwan Lim, MD

Asan Medical Center

Chang-Wook Nam, MD

Keimyung University Dongsan Medical Center

Seoungjin Oh, MD

NHIC Ilsan Hospital

Chang-Bum Park, MD

Seoul Veterans Hospital

Duk-Woo Park, MD

Asan Medical Center

Kyoung-Ha Park, MD

Hangang Sacred Heart Hospital

Seong-Wook Park, MD

Asan Medical Center

Seung-Jung Park, MD

Asan Medical Center

Seung-Woon Rha, MD

Korea University Guro Hospital

Ki Bae Seung, MD

The Catholic University of Korea, St. Mary's Hospital

Eun-Seok Shin, MD

Ulsan University Hospital

Il Woo Suh, MD

Sam Medical Center

Jon Suh, MD

Soon Chun Hyang University Bucheon Hospital

Seung-Jea Tahk, MD

Ajou University Hospital

Joo-Young Yang, MD

NHIC Ilsan Hospital

Tae Hyun Yang, MD

Inje University Pusan Paik Hospital

Junghan Yoon, MD

Yonsei University Wonju College of Medicine

Myeong-Ho Yoon, MD

Ajou University Hospital

2008 Faculty of the year

Buxing Chen, MD

Beijing Electric Power Hospital, China

Jin Man Cho, MD

Kyung Hee University East West Neo Medical Center, Korea

Jae Woong Choi, MD

Eulji Medical Hospital, Korea

Seong-Hoon Choi, MD

Kangnam Sacred Heart Hospital, Korea

Jing Dong Ding, MD

Zhongda Hospital & School of Clinical Medicine Southeast University, China

Mahsa Fadavi, MD

Razavi Hospital, Iran

Maddury Jyotsna, MD

Nizam's Institute of Medical Sciences, India

Young-Guk Ko, MD

Yonsei University College of Medicine, Korea

Jin Bae Lee, MD

Daegu Catholic University Medical Center, Korea

Hossein Mehdikhani Karimabad, MD

Razavi Hospital, Iran

Jin-Sun Park, MD

Ajou University Medical Center, Korea

Sudhir Rathore, MD

Toyohashi Heart Center, Japan

Il Rhee, MD

Dong-Eui University Hospital, Korea

“More Technical and More Practical Workshop”

Program

Main Arena

Mugunghwa Hall, 1F

8:00 AM **Opening Remark**

Myeong-Ki Hong

8:05 AM **Welcome Address**

Gary S. Mintz

Invasive Imaging I

Moderators: Gary S. Mintz, Seung-Jung Park

Coronary Angiography

8:10 AM Fundamental and QCA Measurement

Young-Hak Kim

IVUS

8:25 AM Fundamental and IVUS Measurement

Myeong-Ki Hong

8:40 AM Pre-Intervention Assessment and Optimizing Final Result

Gary S. Mintz

Virtual Histology; Clinical Applicability

8:55 AM Current Status and Future Perspectives

Gary S. Mintz

9:10 AM Wrapping Up Current Clinical Trials and Future Study Program

Duk-Woo Park

OCT

9:25 AM Basics and Techniques

So-Yeon Choi

9:35 AM OCT Recent Development

Ik-Kyung Jang

9:50 AM Intravascular Optical Coherence Tomography in Research and Clinical Practice

Evelyn Regar

10:05 AM Clinical Trials Update and Future Perspectives

Takashi Akasaka

10:20 AM Optical Coherence Tomography Findings of Coronary Vulnerable Plaques

Kenichi Fujii

10:35 AM **Coffee Break**

Invasive Imaging II

Moderators: Ik-Kyung Jang, Seong-Wook Park

10:55 AM Tissue Characterization of Coronary Plaques Using Integrated Backscatter Intravascular Ultrasound (IB-IVUS)

Masanori Kawasaki

11:10 AM Relation Between Neointimal Coverage and Yellow Grade of the Segment After Sirolimus-Eluting Stent Evaluated by Coronary Angioscopy

Junko Honye

11:25 AM Neointimal Coverage of Zotarolimus-Eluting Stent Using Optical Coherence Tomography

Jung-Sun Kim

11:40 AM Evaluation of DES Using OCT(Over All)

Mitsuyasu Terashima

11:55 AM Heart CT and IVUS for CTO-PCI Including RETROgrade Technique

Satoru Sumitsuji

Challenging Case Competition with Lunch I

Mugunghwa Hall, 1F

Moderators: Gary S. Mintz, Myeong-Ki Hong

Discussants and Graders: Takashi Akasaka, Wook Sung Chung, William F. Fearon, Junbo Ge, Junko Honye, Masanori Kawasaki, Chong-Jin Kim, Hyo-Soo Kim, Cheol Whan Lee, Michael McConnell, Jae-Kuen Oh, Seung-Jung Park

12:10 PM Disparity Between Echocardiogram and Cardiac MRI Findings in a Patient with AMI. Who is Right, Echo Cardiologist or MRI Radiologist?

Young-Guk Ko

12:20 PM Late Incomplete Stent Apposition Following SES

Sudhir Rathore

12:30 PM A Case of Acute Myocardial Infarction in a Young Woman due to Congenital Coronary Artery Aneurysm

Young Joon Hong

12:40 PM Coil Embolization to Aberrant Branch of LIMA

Hossein Mehdikhani Karimabad

12:50 PM Recanalization of Chronic Totally Occluded Left Anterior Descending Artery Supported by 64-Channel Coronary MDCT

Jae-Sik Jang

1:00 PM The IVUS and FFR Guided PCI in Short Discrete Ambiguous Stenosis

Jin-Sun Park

1:10 PM OCT Finding of Very Late Thrombosis After SES Stenting

Buxing Chen

1:20 PM A Case of Coronary Occlusion with Multiple Microchannels After Spontaneous Dissection of Right Coronary Artery, which was Treated Successfully with Plaque Modification by SafeCut Balloon Catheter Before Cypher Implantation

Seong-Hoon Choi

1:30 PM Best Challenging Case Selection & Announcement

Challenging Case Competition with Lunch II

Presidio Room, 2F

Moderators: John McB. Hodgson, Ki Bae Seung

Discussants and Graders: Young-Keun Ahn, Kenichi Fujii, Ik-Kyung Jang, Seung-Ho Hur, Seong-Wook Park, Evelyn Regar, Seung-Jea Tahk, Junghan Yoon

Date_ Saturday, November 22, 2008

Venue_ Sheraton Grande Walkerhill Hotel, Seoul, Korea

- 12:10 PM Multiple Coronary Aneurysm After Three Different Type of Drug-Eluting Stent Implantation
Jin Bae Lee
- 12:20 PM Transcatheter Closure of Atrial Septal Aneurysm (ASA) Associated with Secundum Atrial Septal Defect (ASD): A Case Report
Jing Dong Ding
- 12:30 PM Early Developed Giant Coronary Aneurysm After CTO Intervention and its Spontaneous Regression
Il Rhee
- 12:40 PM Transcatheter Closure of a Postmyocardial Infarction Ventricular Septal Rupture with an Amplatzer Septal Occluder
Mahsa Fadavi
- 12:50 PM Assessment and Treatment of Dynamic Obstruction in Anomalous Right Coronary Artery Using Dynamic Diastolic Pressure Gradient Change during Dobutamine Challenge with Rapid Atrial Pacing
Jae Woong Choi
- 1:00 PM Vasospasm Mimicking Peripheral Arterial Lesion
Maddury Jyotsna
- 1:10 PM Rapid Change of Necrotic Core in Acute Myocardial Infarction: 2 cases
Eun-Seok Shin
- 1:20 PM Spontaneous Recanalization of a Coronary Artery Following Thrombotic Occlusion. In Vivo Demonstration With Optical Coherence Tomography
Jin Man Cho
- 1:30 PM Best Challenging Case Selection & Announcement

Non-Invasive Imaging

Moderators: John McB, Hodgson, Tae-Hwan Lim

- 1:45 PM Defining Plaque Composition by CTA: The Latest Tool to Monitor Therapy?
John McB, Hodgson
- 2:00 PM Role of MDCT in Ischemic Heart Disease
Yeon Hyeon Choe
- 2:15 PM Coronary MRI - State of the Art
Michael McConnell
- 2:30 PM MRI is Better
Jae-Kuen Oh
- 2:45 PM Cardiac PET/CT: Current Applications and Future Directions
Ilhho Cho

Physiology

Moderators: William F. Fearon, Seung-Jea Tahk

- 3:00 PM Hyperemic Stimuli
Seung-Jea Tahk
- 3:15 PM FFR in Multivessel Disease: Results of the F.A.M.E. Multicenter, International, Randomized Study Comparing FFR Guided PCI to Angio Guided PCI in Patients with Multivessel CAD
William F. Fearon
- 3:30 PM Evaluation of Microvascular Dysfunction
Takashi Akasaka
- 3:45 PM Combined Use of Imaging and Computational Techniques to Investigate Fluid Dynamics in Normal and Stented Coronary Artery Bifurcations
John LaDisa

4:00 PM **Coffee Break**

Vulnerable Plaque

Moderators: Junbo Ge, Myeong-Ki Hong

- 4:15 PM Identification of Vulnerable Plaque by IMUS
Junbo Ge
- 4:30 PM Assessment of Vulnerable Plaques by OCT
Evelyn Regar
- 4:45 PM Perspectives in Vulnerable Plaque Imaging
Gary S. Mintz

Great Debate

Moderators: Evelyn Regar, Ik-Kyung Jang

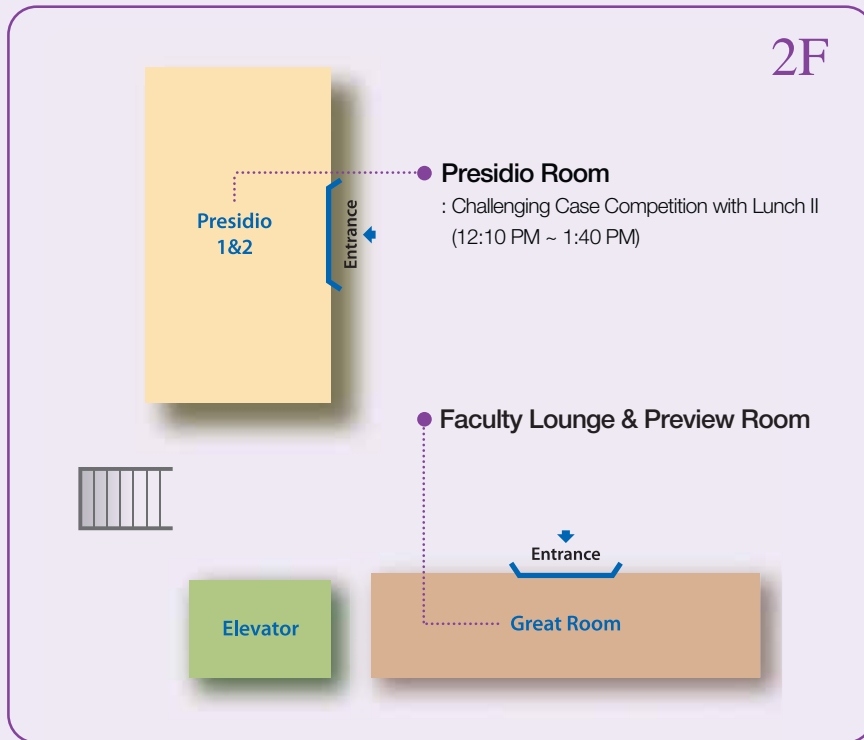
Panelists: Jang Ho Bae, Junbo Ge, Myeong-Ki Hong, Seung-Ho Hur, Yang-Soo Jang, Bon-Kwon Koo, Satoru Sumitsuji, Seung-Jea Tahk, Mitsuyasu Terashima, Joo-Young Yang

- 5:00 PM MUS-Guided PCI
Gary S. Mintz
- 5:15 PM FFR-Guided PCI
William F. Fearon
- 5:30 PM Panel Discussion
- 5:45 PM **Summary and Closing Remark**
Gary S. Mintz
- 6:00 PM **Adjourn**

Floor Plan

This meeting & exhibit will be open from 8:00 AM to 6:00 PM.

Attendees are provided with opportunities to learn more about new clinical application of cutting-edge techniques related to the field of imaging & physiology.



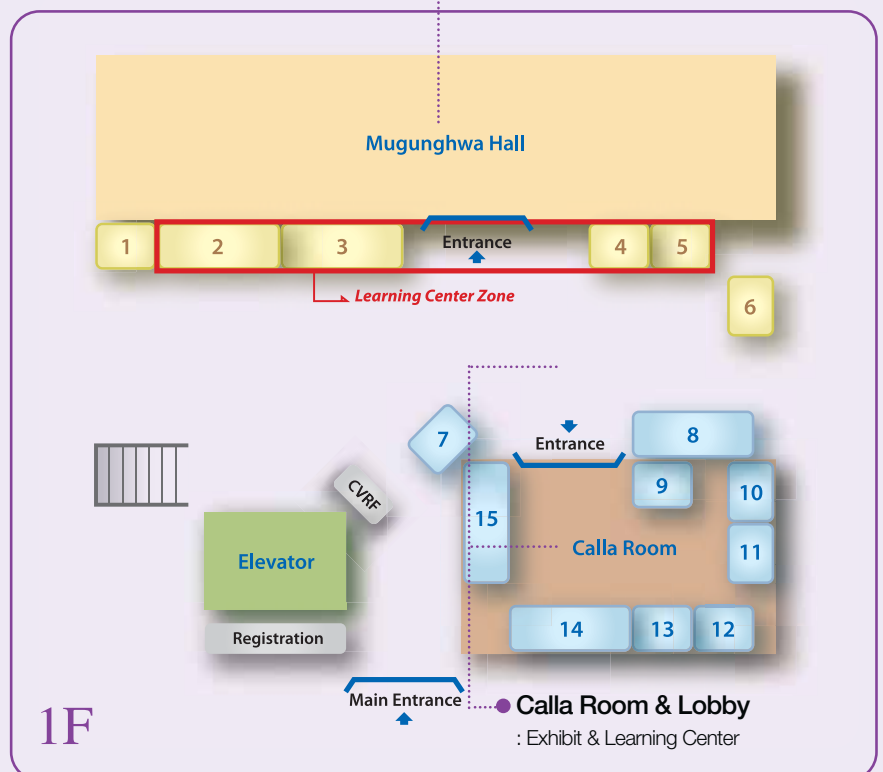
Main Arena

- Main Session
- Challenging Case Competition with Lunch I
- Great Debate

- Exhibitors -

- 1 GE Healthcare
- 2 Boston Scientific
- 3 Volcano
- 4 Vasocare Co., Ltd.
- 5 Focusmedical Co., Ltd, Goodman Korea, LightLab Imaging. Inc
- 6 Pfizer Pharmaceutical Korea Ltd.
- 7 Korea Otsuka Pharmaceutical Co., Ltd.
- 8 Bristol-Myers Squibb Korea
- 9 Dong-A Pharm
- 10 NOVARTIS Korea
- 11 Guerbet Korea
- 12 St. Jude Medical Korea
- 13 Medtronic Korea Co., Ltd.
- 14 Abbott Vascular
- 15 Johnson & Johnson Medical Korea Ltd.

Learning Center



CardioVascular (CVRF) Research Foundation

Established in 2002, the CardioVascular Research Foundation(CVRF) is a non-profit clinical research foundation to contribute in improving healthy lives of patients with cardiovascular disease by promoting preclinical and clinical researches, educating physicians and teaching patients. (www.cvrf.org)

■ Research

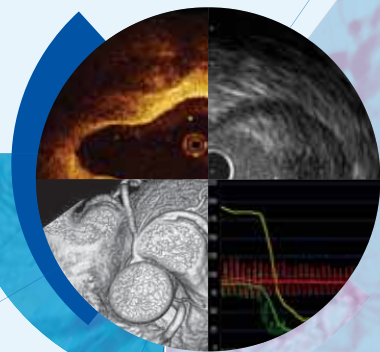
- Clinical Research Coordinating Center (CRCC)
- Translational Research
- Paper Publication

■ Conference

- Angioplasty Summit-TCT Asia Pacific
www.summit-tctap.com
- Left Main & Bifurcation Summit
www.lm-summit.com
- IMAGING & PHYSIOLOGY Summit
www.imaging-physiology.com
- Chronic Total Occlusion (CTO) Live
www.cto-live.com

■ Education

- SummitMD Website
www.summitMD.com
- Books
- Training Programs
 - Fellowship Training Program
 - Workshop Training Program



Seoul, Korea, November 22, 2008

2nd IMAGING & PHYSIOLOGY Summit

www.imaging-physiology.com

Acknowledgement

We, CVRF, wish to extend special appreciation to the following companies for the support of their educational grants in this meeting. Imaging & Physiology Summit 2008 is partially funded by educational grants from commercial supporters.

» Educational Grant Supporters

- Boston Scientific
- Focusmedical Co., Ltd, Goodman Korea, LightLab Imaging. Inc
- Philips
- Siemens Medical Solution
- Vasocare Co., Ltd, Radi Medical Systems
- Volcano, BT Plus